

California



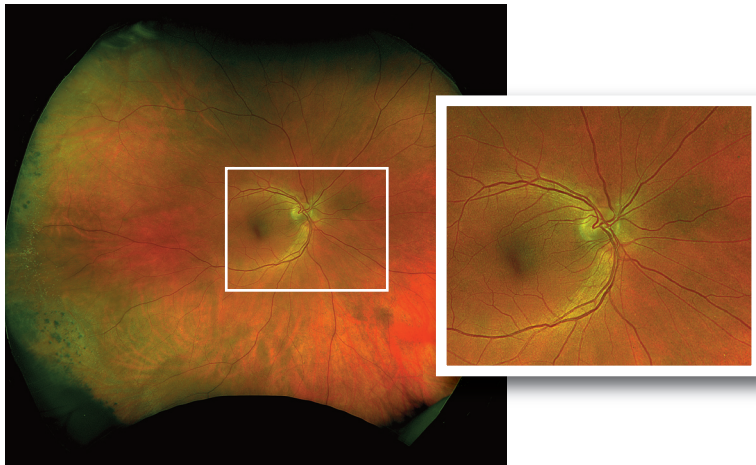
INNOVATIVE TECHNOLOGY

California was designed for medical imaging and is available in three models with multiple imaging modality options to meet the needs and budget of every practice. *California* produces a 200°, single-capture retinal image of unrivaled clarity in less than ½ second and is changing management of diseases including DR, AMD, and uveitis.

Available imaging modalities are: color, red-free, choroidal, autofluorescence, FA, and ICGA.

optomap® images are presented in a consistent geometry that accurately represents anatomical features across the retina. Automatic image registration enables pixel to pixel comparisons of images across modalities and from visit to visit.

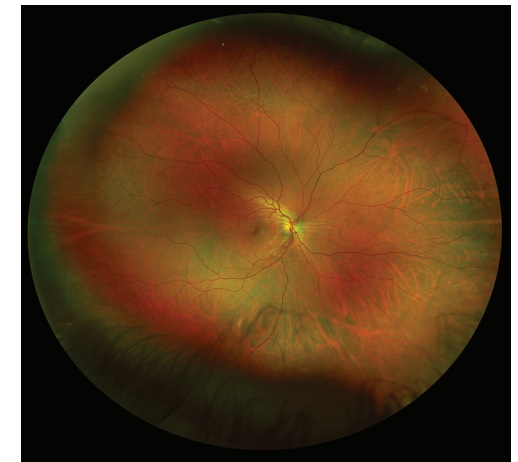
California's innovative optical design provides high resolution images showing fine detail whether viewing the entire retina or zoomed in to inspect macula, optic nerve head, or small pathology.



optomap image showing peripheral chorioretinal scars

FEATURES AND BENEFITS

- Non-mydriatic imaging of the retina in less than ½ second saves time and helps improve clinic flow
- cSLO technology images through most cataracts and small pupils (2 mm)
- 3-in-1 Color Depth Imaging™ provides important clinical data from the retinal surface through the choroid
- Green laser autofluorescence shows macula and optic nerve head detail
- Image overlay tool facilitates comparison of images in different image modes and from visit to visit
- Browser-based image review offers easy, HIPAA-compliant access to data from any connected PC or tablet
- Distance (mm) and area (mm²) measurements provide objective assessment of change over time
- Interweaved angiography saves time by enabling capture of FA and ICG in the same session
- Stereo disc imaging allows assessment of the optic nerve to diagnose and follow the progression of glaucoma
- Auto-montage combines an **optomap** series into a single image showing up to 220° (97%) of the retina



Auto-montage image of a healthy retina



optomap *color*

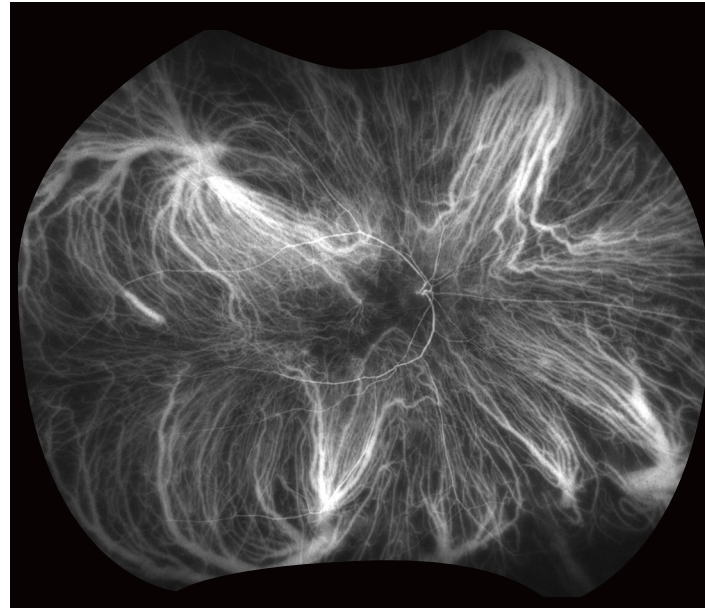


optomap *af*



optomap *fa*

Courtesy of Prof Paulo Stanga



optomap *icg*

Courtesy of Srinivas Sadda, MD

*"The complete, clear picture provided by **optomap** makes us faster and more effective in our examinations and patient discussions. This has enabled us to see approximately five additional patients per day, which more than covers the monthly equipment cost."*

V.N. Batra, MD

San Leandro, CA, US

*"**optomap** is now as much a part of every exam as measuring intraocular pressure. The ability to see so far out into the periphery means earlier detection of sight and life threatening issues which translates into a higher probability of successful treatments."*

D. Katsev, MD

Santa Barbara, CA, US

*"The reality is, before **optomap** we didn't know how much pathology was out there in the retina. The multi-modality California device has become the standard of care for detection and management of diabetic retinopathy, AMD, and other conditions. Optos imaging captures virtually the entire retina in one shot - it doesn't get much better than that!"*

Srinivas Sadda, MD

Los Angeles, CA, US

*"I can see no reason why anyone would not have the (**optomap**) technology."*

S. Segal, MD

Houston, TX, US

TECHNICAL SPECIFICATIONS

TRADE NAME	California		
MODEL NAME / NUMBER	P200DTx / A10650		
CONFIGURATION NAME	California <i>rg</i>	California <i>fa</i>	California <i>icg</i>
IMAGING MODALITIES			
Color	X	X	X
Sensory (red-free)	X	X	X
Choroidal	X	X	X
Autofluorescence	X	X	X
Fluorescein Angiography		X	X
ICG Angiography			X
COLORS	White with Blue Trim	White with Grey Trim	White with Aqua Trim
RESOLUTION	optomap: 20 µm optomap <i>plus</i> : 14 µm		
LASER WAVELENGTHS	Red laser: 635 nm Green laser: 532 nm (for AF) Blue laser: 488 nm (for FA) Infrared laser: 802 nm (for ICG)		
EXPOSURE TIME	Less than 0.4 seconds		
FOOTPRINT	Width: 550 mm / 22 in Depth: 550 mm / 22 in including chinrest Height: 608-632 mm / 24-25 in		
WEIGHT	34 kg / 75 lbs		
TABLE SPACE REQUIREMENTS (not including wheel position)	Width: 887 mm / 35 in Depth: 600 mm / 24 in Height: 725 to 1205 mm / 29 - 48 in		
LASER CLASS	Laser safety class-1 following EN60825-1: 2007 and 21 CFR1040.10 and 1040.11		
SYSTEM VOLTAGE	100-240Vac, 50/60Hz		
POWER CONSUMPTION	300VA		
COMMUNICATION PROTOCOL	DICOM Compatible		



More than 1,000 published and ongoing clinical trials as well as thousands of case studies and testimonials show the long-term value of **optomap** imaging in diagnosis, treatment planning and patient engagement.

NOTE: Specifications are subject to change without notice.



Optos plc
Queensferry House
Carnegie Campus
Enterprise Way
Dunfermline, Fife
Scotland KY11 8GR
Tel: +44 (0)1383 843350
ics@optos.com

Optos, Inc.
500 Nickerson Road
Suite 201
Marlborough, MA 01752
USA
Tel: 800 854 3039
Tel: 508 787 1400
usinfo@optos.com

Optos Australia
10 Myer Court
Beverly
South Australia 5009
Tel: +61 8 8444 6500
auinfo@optos.com

