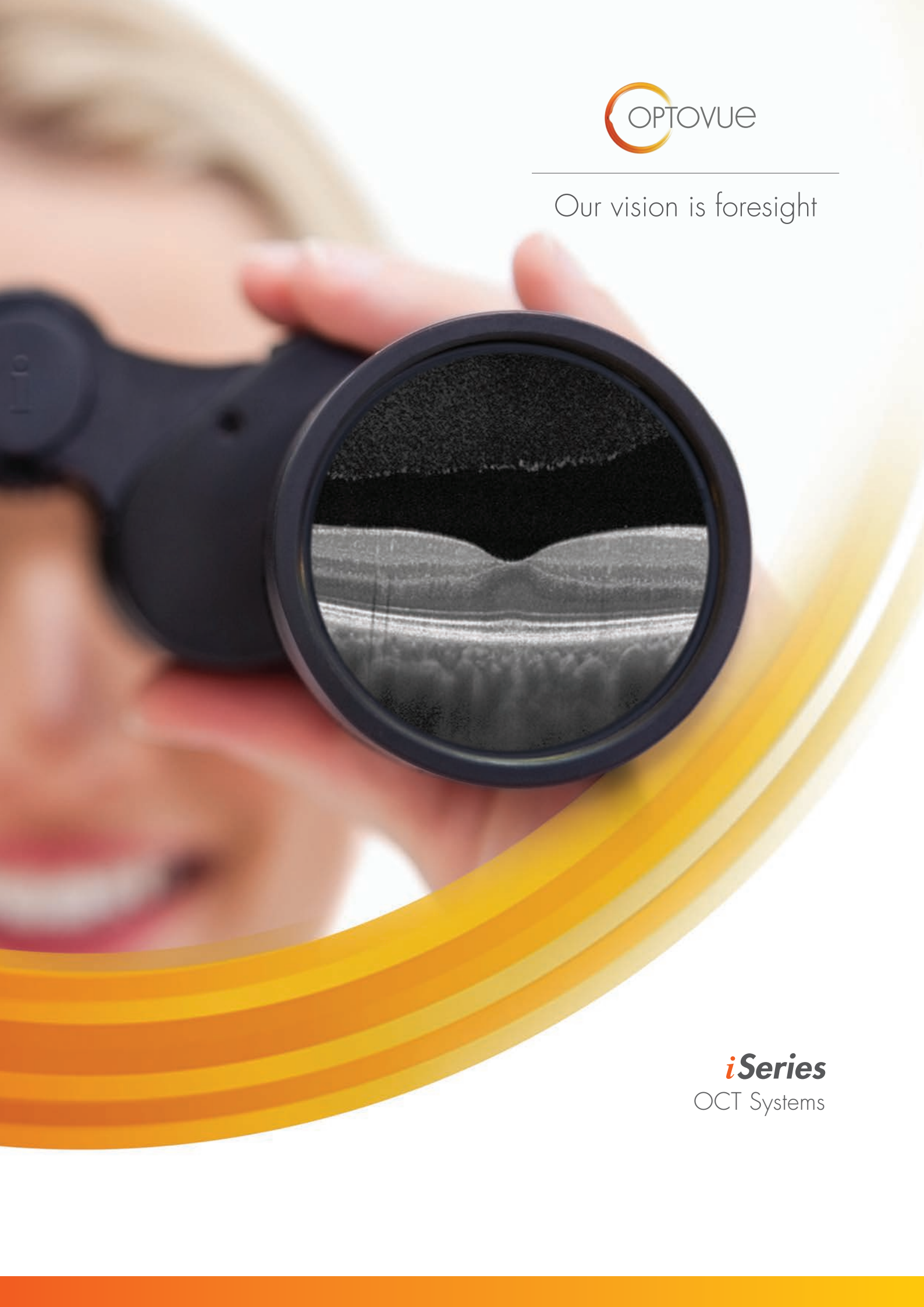




Our vision is foresight



iSeries
OCT Systems

The Optovue *iSeries*

Improving OCT performance with ease

Who ever said advanced OCT scanning had to be complicated? When an OCT design puts user experience first, it can be simple to learn and easy to use. So it is with the Optovue *iSeries*. To be any easier they would have to run themselves—and sometimes they do!

But don't confuse simplicity with performance. The *iSeries* systems are fully featured and deliver many exclusive Optovue capabilities such as ganglion cell complex (GCC) analysis with focal loss volume (FLV%) and global loss volume (GLV%) metrics, the *iWellnessExam*® and the Cornea Advance module, which includes Vault Mapping for specialty lens fitting. The *iSeries* also benefits from a large, ethnically diverse normative database.

Engineered for your OCT success

iSeries systems are ideal for eye care providers (ECPs) who need advanced OCT technology that's easy to use and learn. System software is very intuitive with helpful graphics and timely prompts that walk you through an exam. Most users are up to speed in a day.

Another secret to the *iSeries*' simplicity is completeness, the capacity for one OCT to deliver the full spectrum of applications from cornea to retina. Add it all up and you arrive at an unparalleled combination of ease and clinical utility that makes the *iSeries* the best value in OCT—which spells optimum eye health for your patients.

iVue®

The benchmark for eye care practitioners seeking unmatched OCT performance and value—with capabilities you would expect to cost far more.



iFusion®

Combines the advanced OCT capabilities of *iVue* with a high-performance fundus camera that delivers exceptional posterior and anterior segment images.



iScan®

The fully integrated OCT that practically runs itself—setting the standard for simplicity in OCT.

iVue® OCT

Looking deeper. Seeing more.

At first glance, the *iVue® OCT* system may strike you as a simplified OCT. In some ways it is. Lightweight and modular, you can position it wherever suits your needs. As for operational ease, from the moment you turn the system on, its familiar slit-lamp-style design makes scanning a breeze. But when you begin looking deeper, at the resulting diagnostic screens, you get a different picture—the big picture.

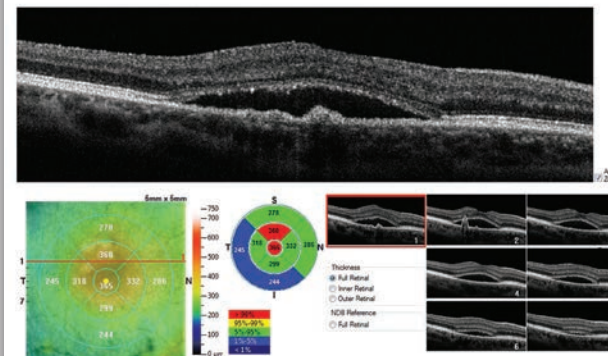
Those extras are standard

Soon you realize that *iVue* provides an impressive array of standard features. OCT scanning and resolution are excellent. Resulting reports for retina, optic nerve head and anterior segment assessment are comprehensive, providing capabilities for which other systems charge extra—if they have them at all. Some are Optovue exclusives such as Epithelial Thickness Mapping (ETM), FLV% and GLV% analysis and Vault Mapping. Every *iVue OCT* also comes standard with the *iWellnessExam®* for more personalized patient eye care. No wonder *iVue* has become the benchmark for unmatched OCT performance and value.

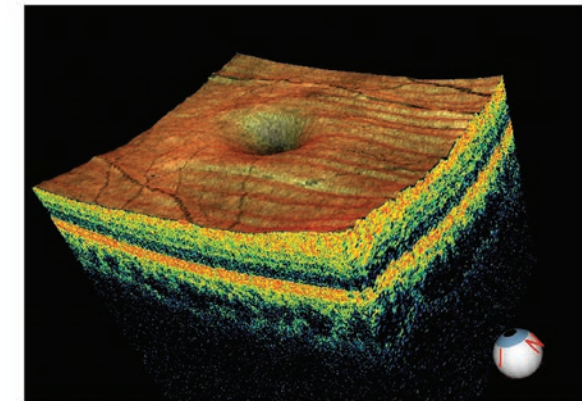
Retina mapping and analysis

Retina mapping with normative comparison, retina change analysis and 3D retinal imaging with en face presentation are all depicted in high-resolution, easy-to-interpret color reports.

Retina Mapping



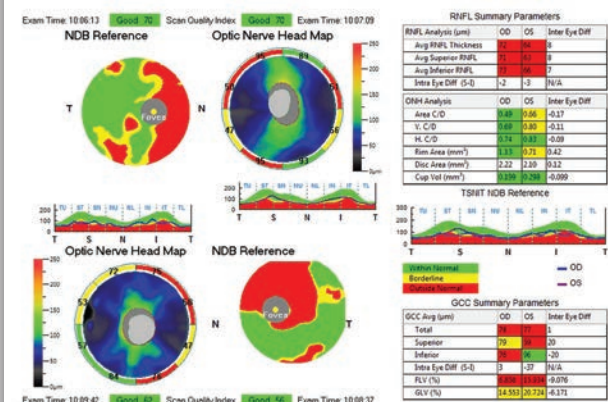
3D Macula



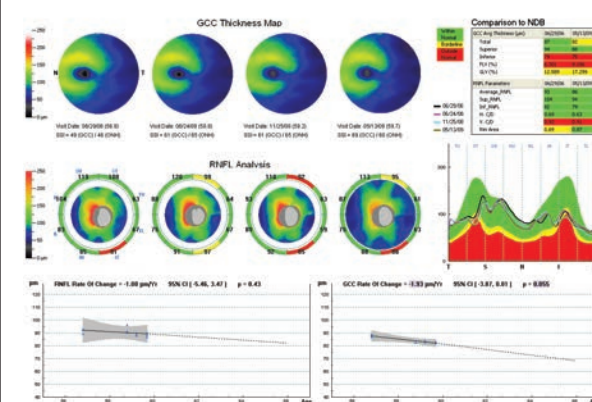
Optic disc and RNFL assessment

Advanced capabilities include RNFL and GCC® combination reports with normative comparison as well as RNFL and GCC trend analysis—both standard.

RNFL/GCC OU Report



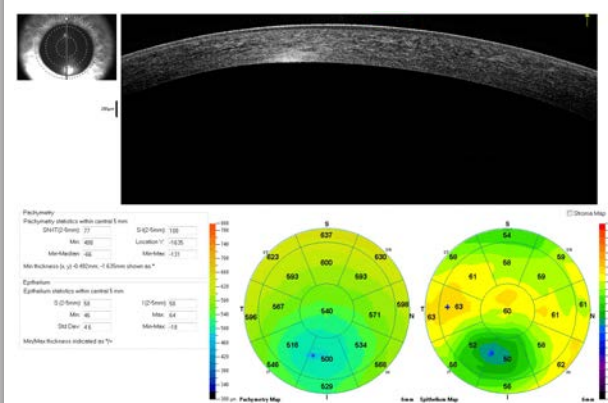
Trend Analysis



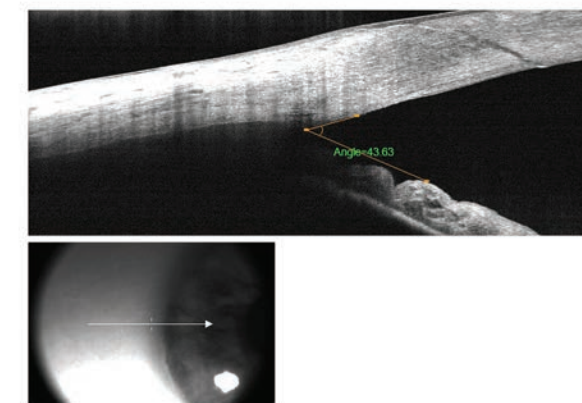
Comprehensive anterior segment analysis

Anterior segment capabilities include highly detailed reports for pachymetry and epithelial thickness mapping, and anterior segment angle measurement.

Pachymetry and Epithelial Thickness Mapping



Anterior Segment Angle with Measurement



iVue specifications

Scanner

OCT Image	26,000 A-scan/second
Depth Resolution (in tissue)	5.0 µm
Traverse Resolution	15 µm (retina)

Scan Range

Depth	2 - 2.3mm (retina)
Scan Beam Wavelength	840nm (+/-10nm)

OCT Fundus Image (En Face)

FOV	(H) 21° x (V) 21°
Minimum Pupil Diameter	2.0mm
External Image (Live IR) FOV	13mm x 9mm

Table

Dimensions (mm)	(W)486 x (L)874 x (H)669-870
Weight (kg)	36

iVue® OCT

Advanced diagnostic imaging capabilities

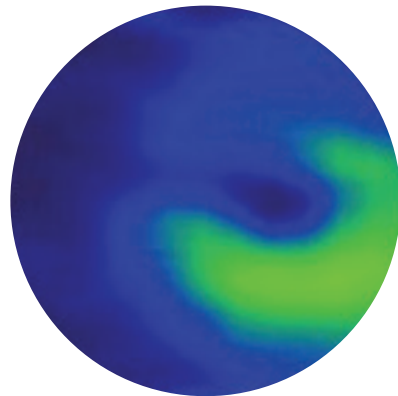
The iVue® platform supports highly advanced diagnostic imaging applications off the shelf including retina, optic nerve head and anterior segment assessments.

iFusion® OCT & Digital Fundus Photography

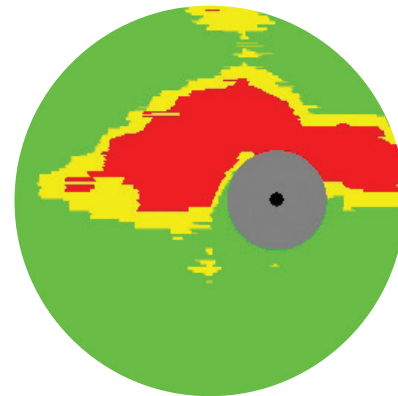
Sometimes image is everything

iFusion® combines the advanced OCT capabilities of iVue with iCam®, a high-performance fundus camera that delivers posterior and anterior segment images with exceptional depth, color and resolution. The system software is very easy to learn and enables fast, flexible image review right out of the gate. With iFusion, you can quickly overlay iVue OCT images onto the fundus photos. And since it utilizes iVue's existing table and frame, its footprint is negligible.

GCC Thickness Map



GCC Thickness with Normative Comparison

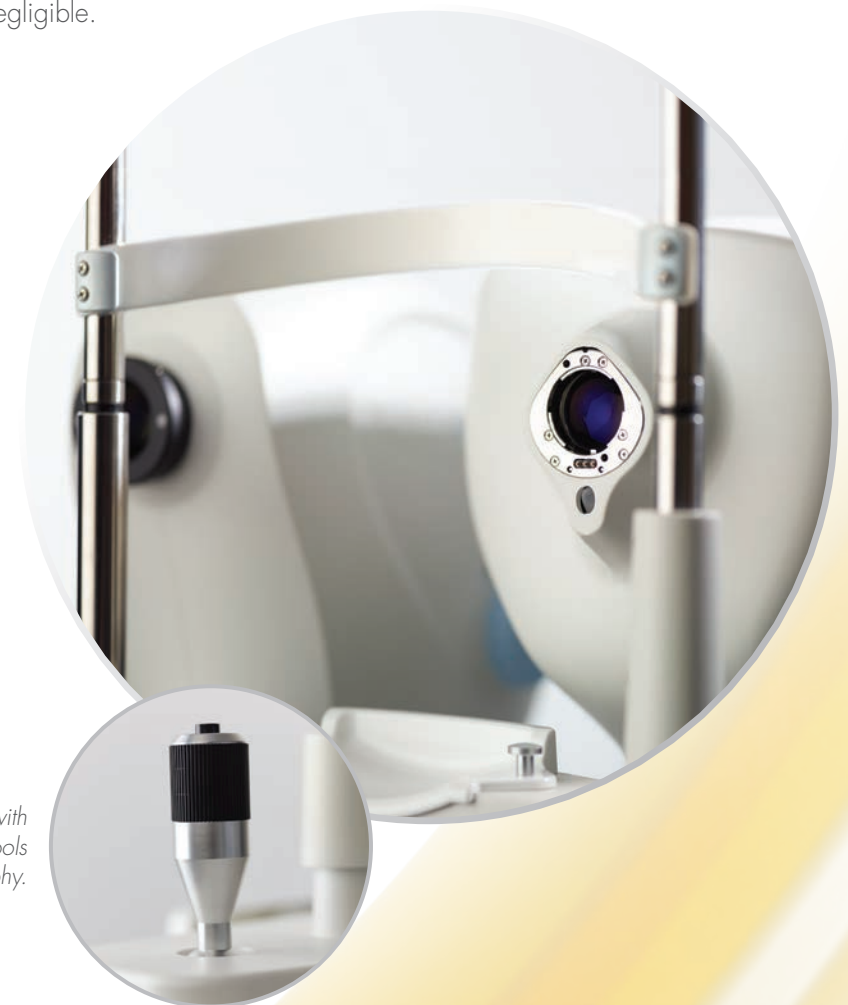


Ganglion Cell Complex (GCC®)

Advanced GCC imaging reveals ganglion cell and axon loss in optic nerve head disease. GCC thickness mapping improves clarity in structural change identification. Optovue's exclusive FLV% and GLV% analyses increase GCC sensitivity and specificity.

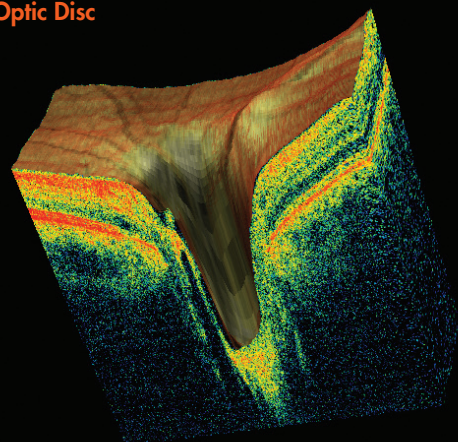
iCam® key features

- 45° color and red-free imaging
- Image sharpening
- 5-megapixel camera for high-fidelity color saturation

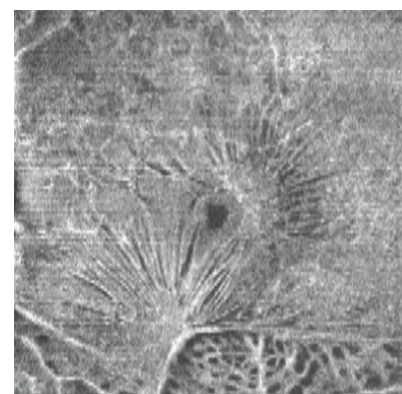


Intuitive joystick control combined with focusing and positioning tools result in quick, efficient photography.

3D Optic Disc



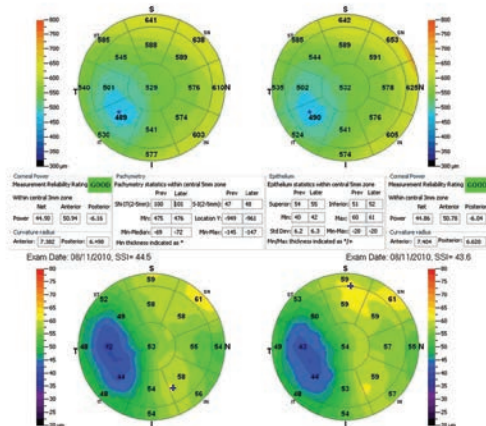
En Face Presentation



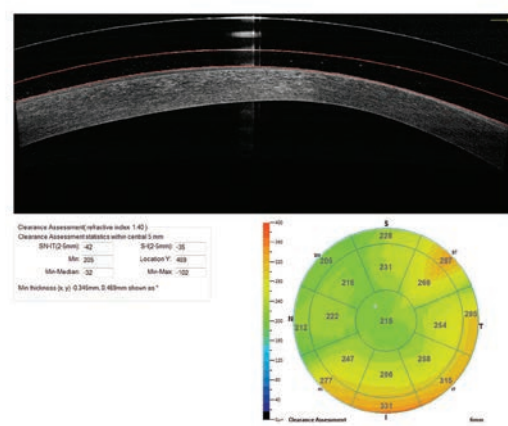
3D and En Face

3D and en face view provides multi-layer, high-resolution virtual dissection of the retina and optic disc, and depicts them in a way that preserves the retina's natural curvature. This reduces distortion for simpler interpretation and enhanced 3D visual assessment.

Pachymetry and Epithelial Thickness Change Analysis

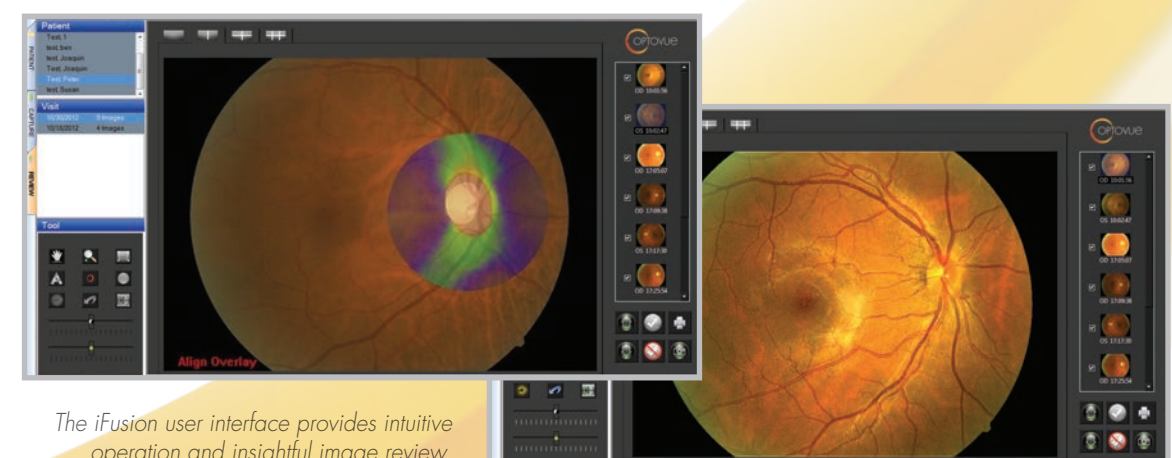


Vault Mapping



Cornea Advance

Cornea Advance expands iVue's clinical utility for assessment of the anterior chamber and cornea. In-depth analysis is enhanced via pachymetry and epithelial thickness mapping with change analysis, and Vault Mapping for specialty lens fitting.



The iFusion user interface provides intuitive operation and insightful image review.

iScan® OCT

The OCT that practically runs itself

Welcome to the world of guided OCT—where advanced scanning is realized in a system so user-friendly it even talks to patients. Meet **iScan®**, the fully integrated OCT that sets the standard for simplicity—perfect for ECPs seeking an affordable OCT entrée. It's ideal for practices with limited staff, since **iScan** delivers consistent scan acquisition with minimal training—and vocally guides patients through an entire exam in any of 12 languages. **iScan** also comes standard with the **iWellnessExam®**, a comprehensive retinal exam that improves patient education and involvement.

Compact and portable, **iScan's** streamlined design integrates the operator interface, display, patient interface and scan head into one console that can be moved from station to station and mounted on any tabletop. Then comes the easy part—plug in, switch on and start scanning.

From Essential to Comprehensive

iScan is available in two configurations: Essential and Comprehensive. **iScan** Essential can be upgraded to **iScan** Comprehensive at any time to enable more advanced diagnostic imaging.

iScan Essential capabilities

- **iWellnessExam**
- Retina mapping
- RNFL and GCC® trend analyses
- FLV% and GLV% analysis to increase GCC sensitivity and specificity

iScan Comprehensive capabilities

iScan Comprehensive includes all **iScan** Essential capabilities plus:

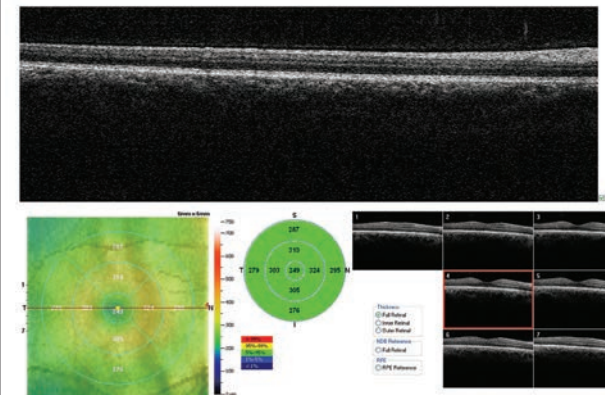
- High-density 3D retinal imaging
- In-depth 3D optic nerve head analysis
- Cornea Advance anterior segment imaging and measurement



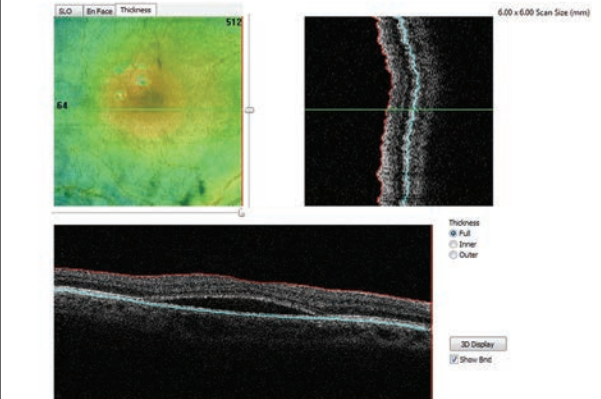
High-density 3D retinal imaging

Retinal imaging capabilities include HD crossline scanning and 3D retina scan with en face presentation, which enables virtual retinal dissection by displaying three different reference planes: ILM, IPL and RPE.

Retina Mapping



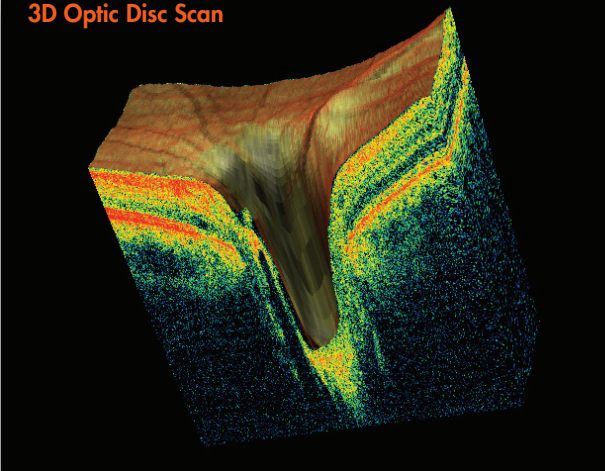
3D Retina



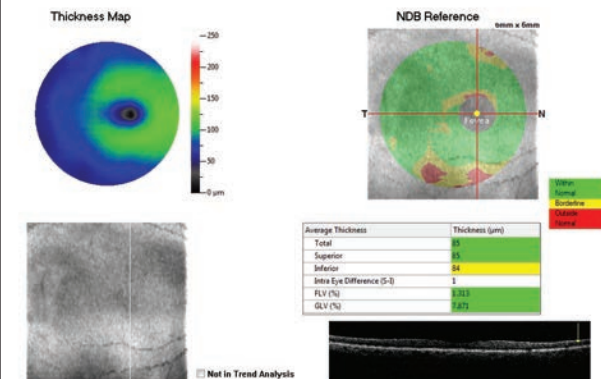
In-depth 3D optic disc analysis

3D disc scan depicts the optic nerve in cross section with the representative thicknesses of selected slices. GCC analysis helps identify ganglion cell loss, which sometimes precedes RNFL loss.

3D Optic Disc Scan



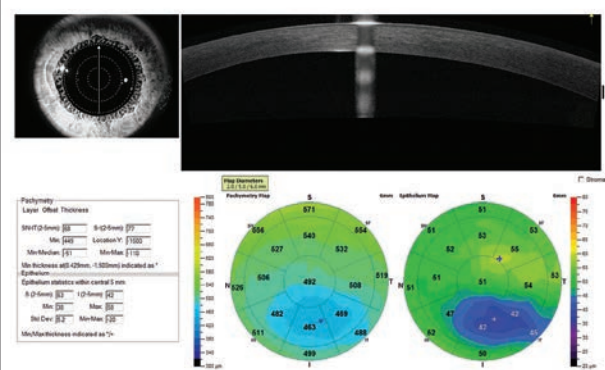
GCC Single Eye



Anterior segment imaging and measurement

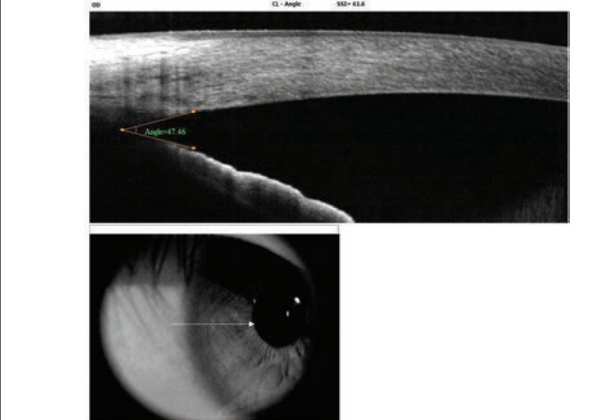
iScan Comprehensive includes Cornea Advance anterior segment imaging features such as pachymetry and epithelial thickness mapping, a variety of corneal and angle measurement tools and exclusive Vault Mapping.

Pachymetry and Epithelial Thickness Mapping



* Image courtesy of Barry Eiden, OD, FAAO

Anterior Segment Angle with Measurement



iScan specifications

Scanner

OCT Image	26,000 A-scan/second
Depth Resolution (in tissue)	5.0 µm
Traverse Resolution	15 µm (retina)

Scan Range

Depth	2 - 2.3mm (retina)
Scan Beam Wavelength	840nm (+/-10nm)

OCT Fundus Image (En Face)

FOV	(H) 21° x (V) 21°
Minimum Pupil Diameter	2.5mm
External Image (Live IR) FOV	13mm x 9mm

Size

Dimensions (mm)	(W)508 x (L)406 x (H)457
Weight (kg)	19.5

iWellnessExam®

A clear path to patient eye health

The *iWellnessExam*® is an Optovue exclusive that delivers a quick, easy OCT scan to promote better overall patient eye health. Its usefulness stems from a single, comprehensive report that depicts:

- Retinal thickness and GCC® thickness with normative comparison
- Symmetry analysis
- FLV% and GLV%, proprietary Optovue GCC metrics that provide important information to aid in ocular disease diagnosis and management
- Eight high-resolution B-scans



iWellnessExam benefits patients

Ultimately *iWellness* benefits patients by helping them become more involved in their own eye health. The scanning process is simple and quick, and each patient receives comprehensive, personalized eye health information in an easy-to-understand report.

iWellnessExam benefits eye care providers

iWellness benefits ECPs by providing a valuable assessment tool that can reveal the need for more extensive imaging. It also streamlines the exam process by quickly confirming normal—or helping you more efficiently diagnose pathology. Optovue's current *iWellnessExam* users have affirmed that the *iWellnessExam* improves patient involvement, loyalty and retention. This helps you grow and differentiate your eye care practice, while also providing a new revenue stream.

Retinal thickness map uncovers thinning and thickening



GCC map can reveal GCC thinning

ETDRS diagram shows average retinal thickness by zone as compared to the normative database

Optovue's exclusive FLV% and GLV% provide valuable data points to aid in the prediction of visual field conversion in glaucoma suspects¹

Our vision is foresight

Since 2006, Optovue has been a leading provider of OCT technology for ocular diagnostic imaging, having installed more than 10,000 systems on six continents. We remain the only company in the world solely focused on furthering the science, efficacy and clinical application of OCT for enhanced eye health. Not surprisingly, this specialization has yielded a history of OCT patents and firsts.

Destination: optimum OCT utilization

Along the way, our mission has been crystal clear: to enable the best possible application of OCT technology through a customer-centric approach. You'll see this reflected in our product designs, which emphasize clinical utility and user experience, not frills. Similar values guide our OCT support teams, totally committed to supporting ECPs in the earliest possible detection of sight-threatening diseases. We simply call this focus foresight. And we cannot imagine a better vision.

Put Optovue foresight to work in your practice today

For a complimentary practice consultation or iSeries system demonstration call +1.510.623.8868 or visit optovue.com.



Our vision is foresight

2800 Bayview Drive, Fremont, CA 94538 +1.510.623.8868 optovue.com

©2017 Optovue, Inc. iVue, iScan, iFusion, iCam, GCC and iWellnessExam are registered trademarks of Optovue, Inc. All rights reserved. Epithelial Thickness Mapping is not FDA-cleared for sale in the USA.

1. Data on file.

301-51856 Rev. B

