



# integre pro™

The multi-color  
photocoagulator optimizing  
diagnosis and treatment

RETINAL PHOTOCOAGULATION

---

LASER TRABECULOPLASTY

---

LASER IRIDOTOMY

---

# High precision performance for retinal disease treatment

Integre Pro™ will enable you to set new standards in retinal laser photocoagulation. Combining high-precision optics matched to optimized laser performance, Integre Pro™ is one of the leading systems for the diagnosis and treatment of retinal disease.

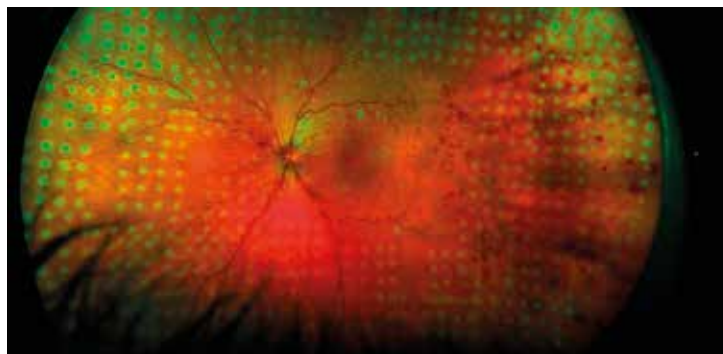
**Choose Integre Pro™ from Ellex,  
and you'll be able to transform  
the efficacy and efficiency of  
retinal photocoagulation.**

integre **pro**.

## Uniform energy distribution

Integre Pro's proprietary dual-mode laser cavity delivers uniform energy distribution across the full spot diameter, eliminating hotspots and achieving optimal, homogenous burns\*.

Whether you are positioning focal treatment in the macular area, or performing PRP in the periphery, it's a key design feature that enables you to achieve consistent, predictable treatment outcomes across a broad range of pathologies.



Integre Pro™ delivers uniform energy distribution

*Image provided by Dmitri Yellachich, MD (Australia)*

*\*Based on system performance testing.*



# A wavelength for every pathology

Integre Pro™ from Ellex features multi-color photocoagulation in an ergonomically advanced all-in-one laser/slit lamp design that provides an effective solution for retinal disease diagnosis and treatment.

**Integre Pro's high power, yellow-red configuration sets the standard for multi-color laser technology, offering the full treatment spectrum of a traditional three-color photocoagulator.**

With Integre Pro™, the following wavelength configurations are available:



YELLOW-RED CONFIGURATION (561 nm and 670 nm)



GREEN-RED CONFIGURATION (532 nm and 670 nm)

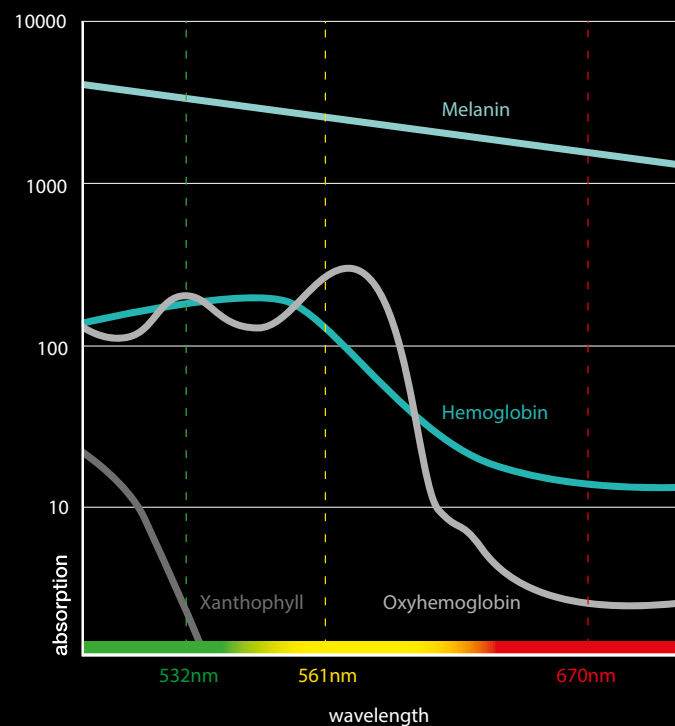


GREEN CONFIGURATION (532 nm)



YELLOW CONFIGURATION (561 nm)

## Wavelength Clinical Characteristics



## Accurate visualization, precise titration

The purpose-built Integre Pro™ slit lamp, which channels the laser directly through the slit lamp optics for better visualization and optimal illumination, is optimized for use in the posterior segment. Featuring a 10-degree stereoscopic angle, it provides enhanced depth perception and a wider peripheral view, as well as high-contrast imaging and optimal illumination of the fundus.

When it's combined with an optimal red-reflex, it's a solution that enables you to titrate power levels precisely to deliver highly accurate treatment.

## Continuous feedback for excellent results

Integre Pro™ delivers real-time, active light feedback that continuously monitors and adjusts power output, combined with high-grade laser components. The result is consistent, reliable performance in the treatment of retinal disease.

# Specifications

<b>Laser Source</b>	Solid-state laser diode and cavity
<b>Wavelength</b>	1 Yellow-red configuration: 561 nm and 670 nm 2 Green-red configuration: 532 nm and 670 nm 3 Yellow configuration: 561 nm 4 Green configuration: 532 nm
<b>Power at the fiber port</b>	Red: 1 watt. Yellow: 1.5 watts. Green: 1.5 watts
<b>Power at the Cornea</b>	Red: 50 – 1500 mW, Yellow: 50 – 1500 mW, Green: 50 – 1500 mW
<b>Exposure Time</b>	0.01 to 8.0 seconds
<b>Spot Size</b>	50 to 1000 $\mu$ m, continuously variable
<b>Repeat Mode</b>	Up to 20 Hertz
<b>Aiming Beam</b>	Red 635 nm, adjustable intensity
<b>Micromanipulator</b>	Ambidextrous, vibration damped
<b>Magnification</b>	6x, 10x, 16x, 25x, 40x
<b>Electrical Requirements</b>	100-240 VAC, 50/60 Hz, 800 VA
<b>Cooling</b>	Air cooled
<b>Weight</b>	32kg, 71 lbs. (laser only)
<b>Dimensions (HxWxD)</b>	62 x 76 x 47 cm, 24 x 30 x 19 inches (laser only)

A choice of Yellow-Red and Green-Red multi-wavelength configurations provides the flexibility to address a number of different pathologies.



All controls — spot size, energy, shot duration and micromanipulator — are conveniently located, right at your fingertips.

# integre pro™



Find out how Integre Pro™ will help you set new standards in deploying laser photocoagulation in the treatment of retinal disease.

## Contact us now to schedule a demonstration

### Ellex Medical Pty Ltd

3 Second Avenue  
Mawson Lakes, SA, 5095 AUSTRALIA  
+61 8 7074 8200

### Ellex Inc. (USA)

7138 Shady Oak Road  
Minneapolis, MN, 55344 USA  
800 824 7444

### Ellex Inc. (Japan)

Harumi Center Bldg 5F, 2-5-24  
Harumi Chuo-ku  
Tokyo 104-0053 JAPAN

### Ellex France SARL

La Chaufferie – 555 chemin  
du bois  
69140 Rillieux la Pape  
+81 3 5859 0470

## Helping the world see clearly

© 2018, Ellex Medical Pty Ltd. Integre Pro, True Spot, Total Solution and Power Control are trademarks of Ellex Medical Pty Ltd. Ellex is a registered trademark of Ellex Medical Pty Ltd. International patents pending and/or granted. 8448322EN-01

Integre Pro™ has a CE Mark (Conformité Européenne) and US Food and Drug Administration (FDA) 510(k) Market clearance for the indications of Retinal Photocoagulation, Laser Trabeculoplasty and Laser Iridotomy.

